

Related topics

Semiconductor, band theory, forbidden zone, intrinsic conduction, extrinsic conduction, valency band, conduction band, Lorentz force, magneto resistance, Neyer-Neldel Rule.

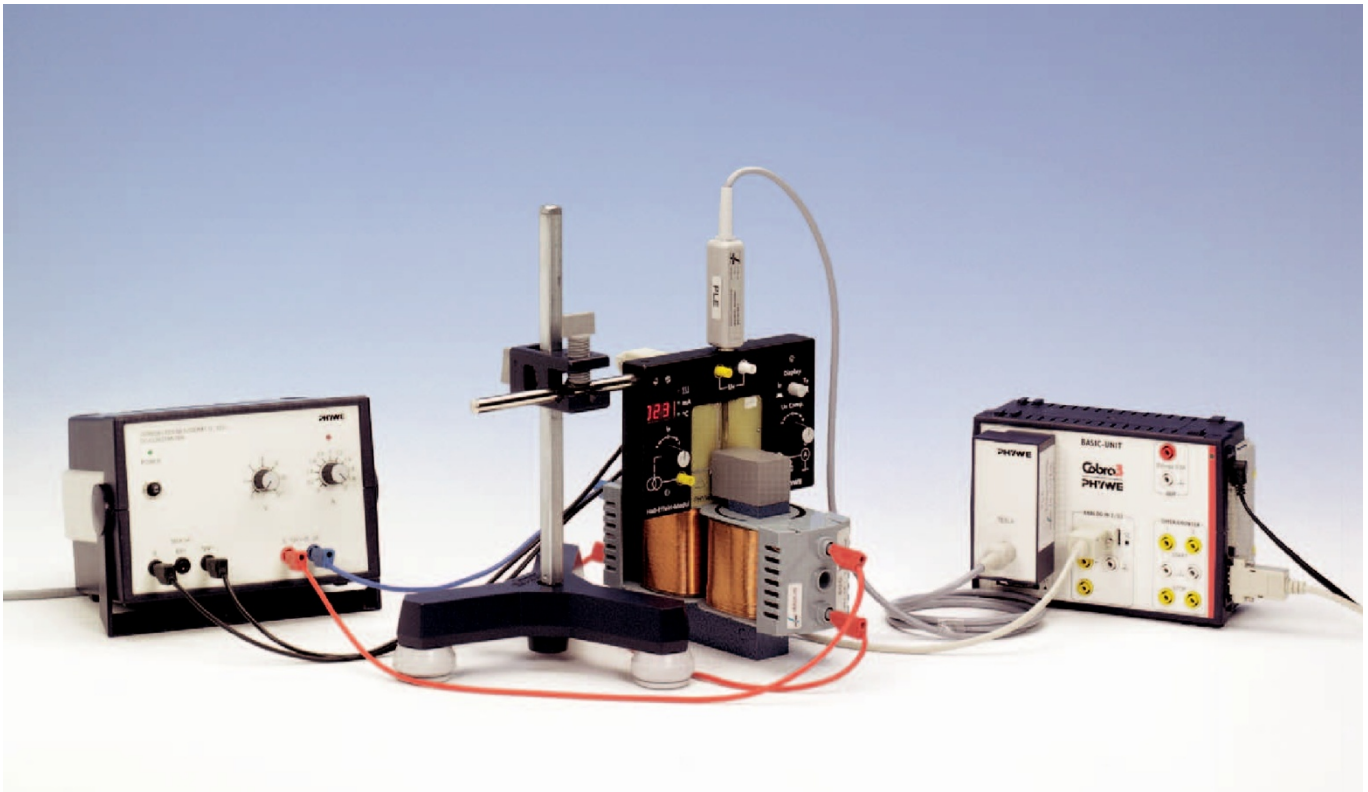
Principle

The resistance and Hall voltage are measured on a rectangular strip of germanium as a function of the temperature and of the magnetic field. From the results obtained the energy gap, specific conductivity, type of charge carrier and the carrier mobility are determined.

Equipment

1	Hall effect module,	11801.00
1	Hall effect, n-Ge, carrier board	11802.01
2	Coil, 600 turns	06514.01
1	Iron core, U-shaped, laminated	06501.00
1	Pole pieces, plane, 30x30x48 mm, 2	06489.00
1	Hall probe, tangent., prot. cap	13610.02
1	Power supply 0-12 V DC/6 V, 12 V AC	13505.93
1	Tripod base -PASS-	02002.55
1	Support rod -PASS-, square, l = 250 mm	02025.55
1	Right angle clamp -PASS-	02040.55
2	Connecting cord, l = 500 mm, red	07361.01
1	Connecting cord, l = 500 mm, blue	07361.04
2	Connecting cord, l = 750 mm, black	07362.05
1	Cobra3 Basic-Unit	12150.00
1	Power supply, 12 V	12151.99
1	Tesla measuring module	12109.00
1	Cobra3 Software Hall	14521.61
2	RS 232 data cable	14602.00
	TESS Expert CD-ROM	16502.42
	PC, Windows [®] 95 or higher	

Fig.1: Experiment set-up for Hall Effect Measurements.



Tasks

1. At constant room temperature and with a uniform magnetic field measure the Hall voltage as a function of the control current and plot the values on a graph (measurement without compensation for error voltage).
2. At room temperature and with a constant control current, measure the voltage across the specimen as a function of the magnetic flux density B .
3. Keeping the control current constant measure the voltage across the specimen as a function of temperature. From the readings taken, calculate the energy gap of germanium.
4. At room temperature measure the Hall Voltage U_H as a function of the magnetic flux density B . From the readings taken, determine the Hall coefficient R_H and the sign of the charge carriers. Also calculate the Hall mobility μ_H and the carrier density n .
5. Measure the Hall voltage U_H as a function of temperature at uniform magnetic flux density B , and plot the readings on a graph.

Fig. 2: Hall effect on a rectangular specimen. The polarity of the Hall voltage indicated is for negative charge carriers.

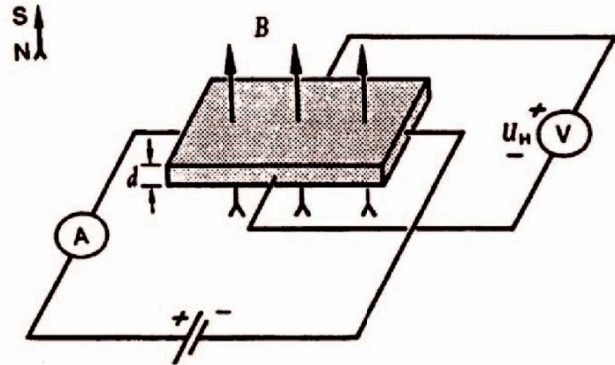


Fig. 3: Start menu of the software Cobra3 Hall effect.

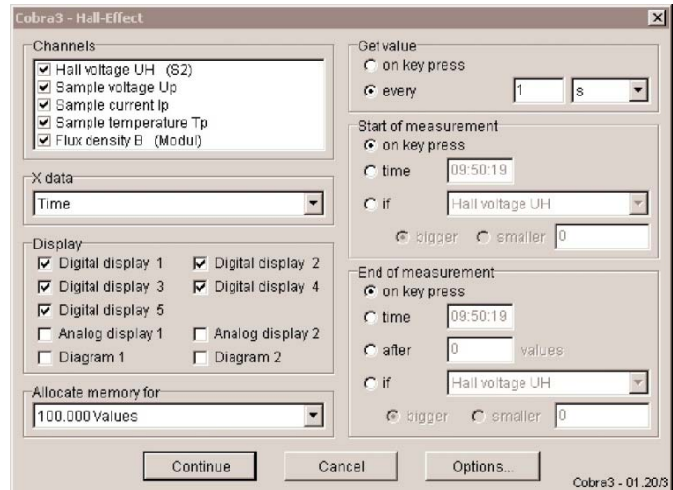
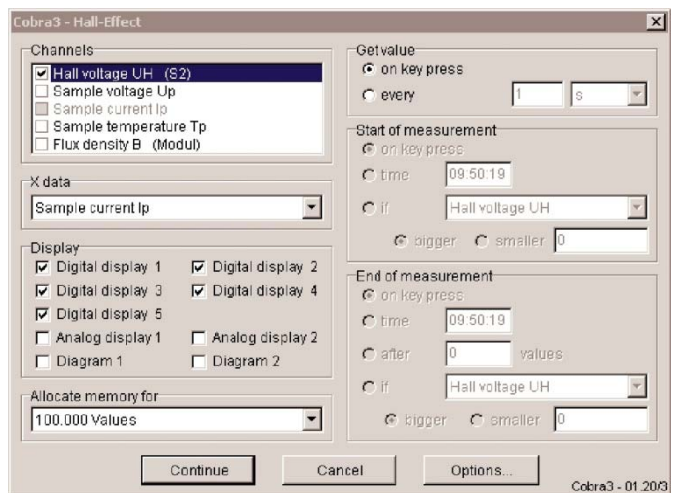


Fig. 4: Example of measurement parameters.



Set-up and Procedure

The experimental set-up is shown in Fig.1. The test piece on the board has to be put into the Hall-Effect-modul via the guide-groove. The module is directly connected with the 12 V~ output of the power unit over the ac-input on the back-side of the module.

The connection to the Analog In 2 – port of the Cobra3 Basic-Unit is realized via a RS232 cable from the RS232-port of the module.

The Tesla-module is connected to the module-port of the Interface.

The plate has to be brought up to the magnet very carefully, so as not to damage the crystal in particular, avoid bending the plate. It has to be in the centre between the pole pieces. The different measurements are controlled by the software.

The magnetic field has to be measured with a hall probe, which can be directly put into the groove in the module as shown in Fig.1. So you can be sure that the magnetic flux is measured directly on the Ge-sample.

To perform the measurements, start the software and choose as gauge the Cobra3 Hall-Effect.

You will receive the following window (Fig.3):

This is the start-screen which appears before every measurement. Here, you can choose, which parameters have to be measured, displayed, etc., e.g. Hall voltage as a function of Sample current (Fig.4)

You can also calibrate the Tesla-module via "options" (Fig.5). Start the measurement-screen by pressing the "continue"-button.

1. Choose The Hall voltage as the measurement-channel and the Sample current as x-axis.
Choose the measurement on "key press".
Continue. Set the magnetic field to a value of 250 mT by changing the voltage and current on the power supply. Determine the hall voltage as a function of the current from -30 mA up to 30 mA in steps of nearly 5 mA.
You will receive a typical measurement like in Fig.6.

2. Choose The Sample voltage as the measurement-channel and the Flux density as x-axis.
Choose the measurement on "key press".
Continue.

Set the control current to 30 mA. Determine the sample voltage as a function of the magnetic induction B . Start with -300 mT by changing the polarity of the coil-current and increase the magnetic induction in steps of nearly 20 mT. At zero point, you have to change the polarity to receive a positive magnetic induction, as the current and voltage are only positive. You will get a typical graph as shown in Fig.7.

3. Choose The Sample voltage as the measurement-channel and the sample temperature as x-axis. Choose the measurement "every 1 s".
Continue.

Set the current to a value of 30 mA. The magnetic field is off. The current remains nearly constant during the measurement, but the voltage changes according to a change in temperature. Start the measurement by activating the heating coil with the "on/off"-knob on the backside of the module and start the measurement in the software.

Determine the change in voltage dependent on the change in temperature for a temperature range of

Fig. 5: Calibration menu.

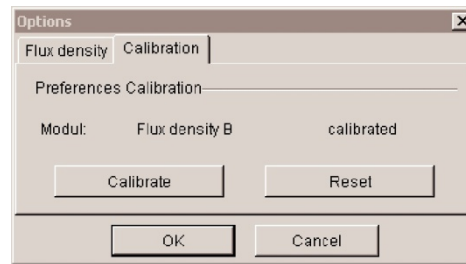


Fig. 6: Hall voltage as a function of current.

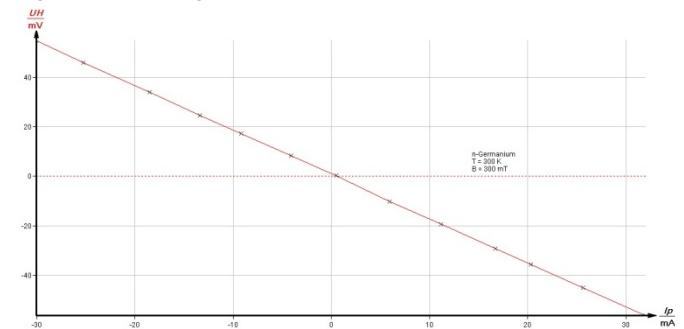


Fig. 7: Change of resistance as a function of the magnetic flux density.

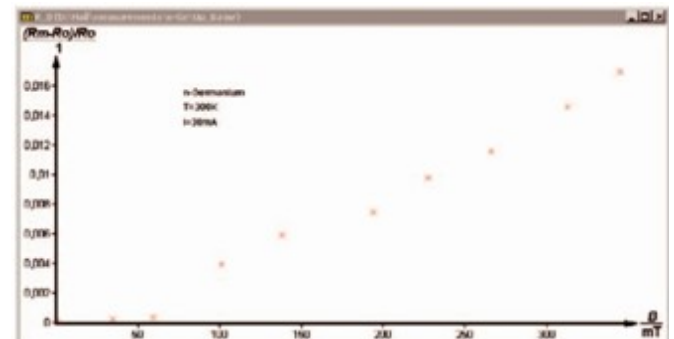
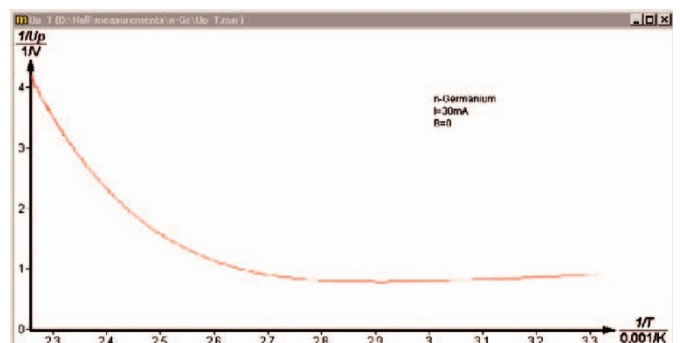


Fig. 8: The reciprocal specimen voltage as a function of the reciprocal absolute temperature (Since I was constant during the experiment, U^{-1} is approximately equal to σ ; the graph is therefore the same as a plot of the conductivity against the reciprocal temperature.)



room temperature to a maximum of 170°C. The module automatically controls and stops the heating.

You will receive a typical curve as shown in Fig.8.

4. Choose The Hall voltage as the measurement-channel and the Flux density as x-axis.

Choose the measurement on "key press". Continue.

Set the current to a value of 30 mA. Determine the Hall voltage as a function of the magnetic induction. Start with -300 mT by changing the polarity of the coil-current and increase the magnetic induction in steps of nearly 20 mT. At zero point, you have to change the polarity. A typical measurement is shown in Fig.9.

5. Choose The Hall voltage as the measurement-channel and the sample temperature as x-axis.

Choose the measurement "every 1 s". Continue.

Set the current to 30 mA and the magnetic induction to 300 mT.

Determine the Hall voltage as a function of the temperature.

Start the measurement by activating the heating coil with the "on/off"-knob on the backside of the module and starting the software.

After a channel modification (compare evaluation) you will receive a curve like Fig.10.

Fig. 9: Hall voltage as a function of the magnetic flux density.

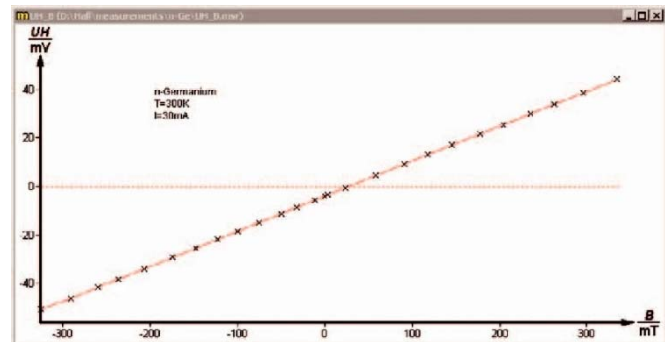
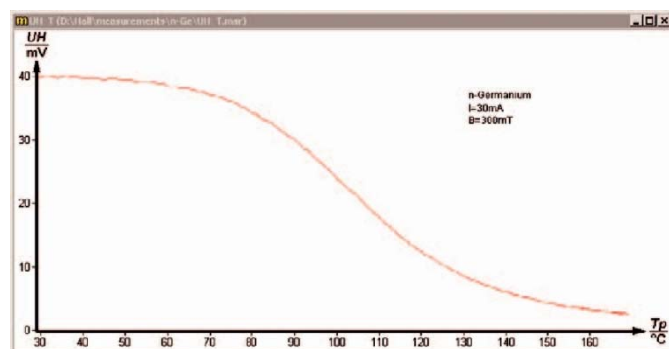


Fig. 10: Hall voltage as a function of temperature.



Theory and evaluation

When a current-carrying conductor in the form of a rectangular strip is placed in a magnetic field with the lines of force at right angles to the current, a transverse e. m. f. – the so called Hall voltage – is set up across the strip.

This phenomenon is due to the Lorentz force: the charge carriers which give rise to the current flow through the specimen are deflected in the magnetic field B as a function of their sign and of their velocity v :

$$\vec{F} = e (\vec{v} \times \vec{B})$$

(F = force acting on charge carriers, e = elementary charge).

Since negative and positive charge carriers have opposite directions of motion in the semiconductor, both are deflected in the same direction.

If the directions of the current and magnetic field are known, the polarity of the Hall voltage tells us whether the current is predominantly due to the drift of negative charges or to the drift of positive charges.

1. Fig. 6 shows that a linear relation exists between the current and the Hall voltage U_H :

$$U_H = \alpha \cdot I$$

(α = proportionality factor)

Fig. 11: Parameters for the first channel modification.

Fig. 12: Parameters for the second channel modification.

- The change of resistance of the specimen in a magnetic field is connected with a decrease of the mean free path of the charge carriers. Fig. 7 shows a non-linear, obviously quadratic change of resistance with increasing field strength. Therefore, use the channel modification in the analysis-menu.
- For intrinsic conduction, the relationship between the conductivity σ and the absolute temperature T is:

$$\sigma = \sigma_0 \cdot \exp\left(-\frac{E_g}{2kT}\right)$$

where E_g is the energy gap between the valency and conduction bands, and k is Boltzmann's constant. A graph of $\log_e \sigma$ against $1/T$ will be linear with a slope of

$$b = -\frac{E_g}{2k}$$

Hence E_g is obtained.

With the measured values in Fig. 8, the regression formulation

$$\ln \sigma = \ln \sigma_0 + \frac{E_g}{2k} \cdot T^{-1}$$

gives slope

$$b = -\frac{E_g}{2k} = -2.87 \cdot 10^3 \text{ K}$$

with a standard deviation $s_b = \pm 0.3 \cdot 10^3 \text{ K}$.

(Since the experiment was performed with a constant current, σ can be replaced by U^{-1} [U = voltage across the specimen]).

Taking

$$k = 8.625 \cdot 10^{-5} \frac{\text{eV}}{\text{K}}$$

we obtain

$$E_g = b \cdot 2k = (0.50 \pm 0.04) \text{ eV.}$$

To receive the necessary graph, do as follows:

Choose the channel modification in the analysis-menu. Set the parameters as shown in Fig.11. Continue. Remember the procedure with the parameters in Fig.12. Now, you have the desired graph. To determine the regression line, choose the "Regression"-icon.

4. With the directions of control current und magnetic field illustrated in Fig. 2, the charge carriers which produce the current are deflected to the front edge of the specimen. If, therefore, the current is due mainly to electrons (as in the case of an n-doped specimen), the front edge becomes negatively charged. In the case of hole conduction (p-doped specimen) it becomes positively charged.

The conductivity σ_0 , carrier mobility μ_H , and the carrier density n are all connected by the Hall coefficient R_H :

$$R_H = \frac{U_H}{B} \cdot \frac{d}{I}, \quad \mu_H = R_H \cdot \sigma_0$$

$$n = \frac{1}{e \cdot R_H}$$

Fig. 9 shows a linear relation between the Hall voltage and the magnetic flux density B . Using the values from Fig. 7, regression with the formulation

$$U_H = U_0 + b \cdot B$$

gives the slope $b = 0.144 \text{ VT}^{-1}$, with the standard deviation $s_b = 0.004 \text{ VT}^{-1}$.

The Hall coefficient R_H is then given by

$$R_H = \frac{U_H}{B} \cdot \frac{d}{I} = b \cdot \frac{d}{I}$$

Thus, if the thickness of specimen $d = 1 \cdot 10^{-3} \text{ m}$ and $I = 0.030 \text{ A}$, then

$$R_H = 4.8 \cdot 10^{-3} \frac{\text{m}^3}{\text{As}}$$

with the standard deviation

$$s_{RH} = \pm 0.2 \cdot 10^3 \frac{\text{m}^3}{\text{As}} .$$

The conductivity at room temperature is calculated from the length l of the specimen, its cross-sectional area A and its resistance R_0 (cf. Experiment 2):

$$\sigma_0 = \frac{l}{R \cdot A} .$$

Thus, if $l = 0.02 \text{ m}$, $R_0 = 37.3 \text{ } \Omega$, $A = 1 \cdot 10^{-5} \text{ m}^2$, then

$$\sigma_0 = 53.6 \text{ } \Omega^{-1} \text{ m}^{-1} .$$

The Hall mobility μ_H of the charge carriers can now be determined from the expression

$$\mu_H = R_H \cdot \sigma_0$$

Using the same values above, this gives

$$\mu_H = (0.257 \pm 0.005) \frac{\text{m}^2}{\text{Vs}} .$$

The electron concentration n of n-doped specimen is given by

$$n = \frac{1}{e \cdot R_H} .$$

Taking $e =$ elementary charge $= 1.602 \cdot 10^{-19} \text{ As}$, we obtain

$$n = 13.0 \cdot 10^{20} \text{ m}^{-3} .$$

5. Fig. 10 shows that the Hall voltage decreases with increasing temperature. Since the experiment was performed with a constant current, it can be assumed that the increase of charge carriers (transition from extrinsic to intrinsic conduction) with the associated reduction of the drift velocity v is responsible for this.

(The same current for a higher number of charge carriers means a lower drift velocity). The drift velocity is in turn related to the Hall voltage by the Lorentz force.

Note

For the sake of simplicity, only the magnitude of the Hall voltage and Hall coefficient has been used here. These values are usually given a negative sign in the case of electron conduction.